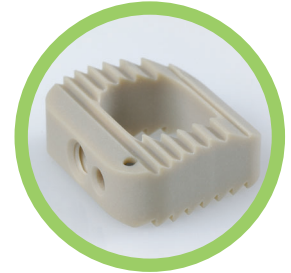
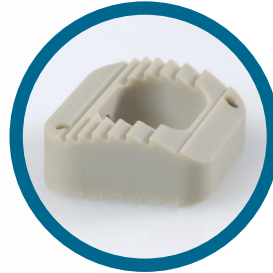


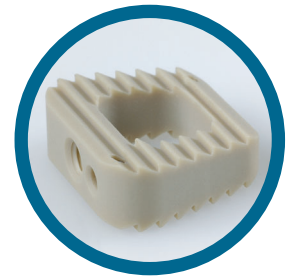
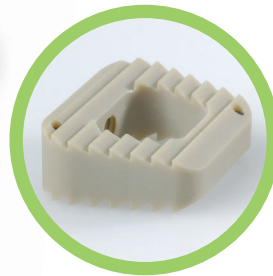
# Zoe

PEEK CERVICAL Cages

Knowledge as leader  
Human as vision



◆ AnatomicalCages



◆ StraightCages



## Characteristics

- **Restores Disc** height as well as cervical lordosis
- **Migration Resistant** tooth profile
- **X-ray Tantalum** markers to visualize the cage
- **Large Grafting Area** to optimize bone fusion
- **Available in Sizes** from 4,5mm to 10mm

CE  
0499

  
**aMED**  
THERAPEUTICS

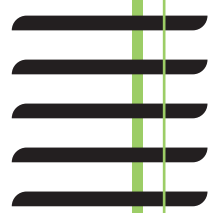
PEEK CERVICAL Cages



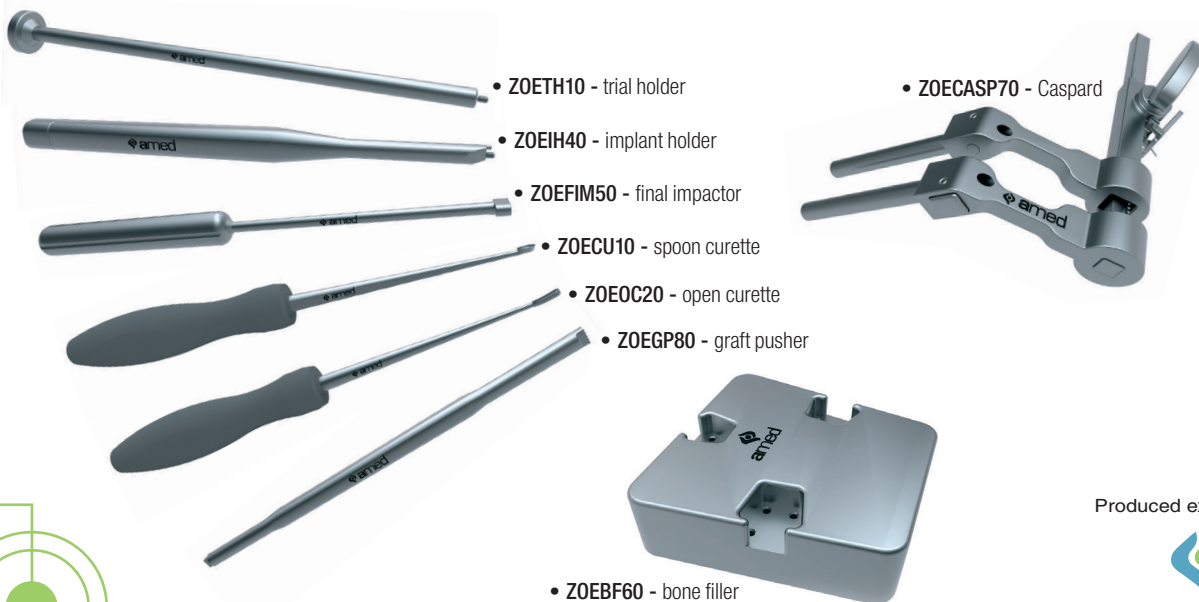
## Implants Item No

## Description

• ZOE1214-4.5	Cervical cage (Anatomical), 12mm x 14mm x <b>4.5mm</b>
• ZOE1214-5	Cervical cage (Anatomical), 12mm x 14mm x <b>5mm</b>
• ZOE1214-6	Cervical cage (Anatomical), 12mm x 14mm x <b>6mm</b>
• ZOE1214-7	Cervical cage (Anatomical), 12mm x 14mm x <b>7mm</b>
• ZOE1214-8	Cervical cage (Anatomical), 12mm x 14mm x <b>8mm</b>
• ZOE1214-9	Cervical cage (Anatomical), 12mm x 14mm x <b>9mm</b>
• ZOE1214-10	Cervical cage (Anatomical), 12mm x 14mm x <b>10mm</b>
• ZOED1214-4.5	Cervical cage (Straight), 12mm x 14mm x <b>4.5mm</b>
• ZOED1214-5	Cervical cage (Straight), 12mm x 14mm x <b>5mm</b>
• ZOED1214-6	Cervical cage (Straight), 12mm x 14mm x <b>6mm</b>
• ZOED1214-7	Cervical cage (Straight), 12mm x 14mm x <b>7mm</b>
• ZOED1214-8	Cervical cage (Straight), 12mm x 14mm x <b>8mm</b>
• ZOED1214-9	Cervical cage (Straight), 12mm x 14mm x <b>9mm</b>
• ZOED1214-10	Cervical cage (Straight), 12mm x 14mm x <b>10mm</b>



## Instruments



CE 0499

Produced exclusively for:

**amed**  
THERAPEUTICS